

The Jave

Boutique villa

EVACUATION PLAN



“Celebrate golden days at The Jave”

Evacuation Plan – The Jave Javea

WELCOME TO THE JAVE!

Your safety is our priority. In case of an emergency, please follow this evacuation plan to ensure the safety of all guests. In the event of an emergency, it is crucial to remain calm and follow the steps below to safely evacuate the premises.

Please familiarize yourself with the following evacuation procedures upon arrival.

EMERGENCY CONTACT INFORMATION

Local emergency numbers

- **General emergency number:** 112
- **Medical emergency number (ambulancia):** 061
- **Fire department:** 080 or 085
- **Guardia Civil:** 062
- **Local police:** 092
- **Agent Costa Blanca Dreams:** +34 635 750 291

Private Healthcare Group

- Open 24 hours a day
- Hospital HCB Denia
- Av. de Gandia, 45, 03700 Dénia, Alicante, Spain
- Tel: +34 966 13 01 90

Public Healthcare Group

- Open 24 hours a day
- Hospital de Denia
- Av. Marina Alta, s/n, 03700 Dénia, Alicante, Spain
- Tel: +34 966 42 90 00

Address The Jave: *Calle Charles Ives 20, 03738, Alicante, Spain.*

PROPERTY OVERVIEW

- Total capacity: 10 guests
- An upper and lower level villa: each with private living areas and access points.

The lay-out:

- First floor:
 - Kitchen
 - Two living rooms
 - Dining room
 - WC
 - One bathroom
 - One bedroom
- Ground floor:
 - Hallway
 - Stairs to the first floor
 - Two bathrooms
 - Three bedrooms
 - Storage room with washer and dryer
- Outdoor areas:
 - Swimming pool (11x4 meters)
 - Lounging spots
 - Patio areas and (rooftop) terrace
 - Outdoor kitchen
 - Stairways connecting different floors and outdoor spaces
 - Multiple exit points

EVACUATION ROUTES

Please take note of all **exit points** on each level of the property. The assembly point for guests is the [parking spot](#), as shown on the map below.

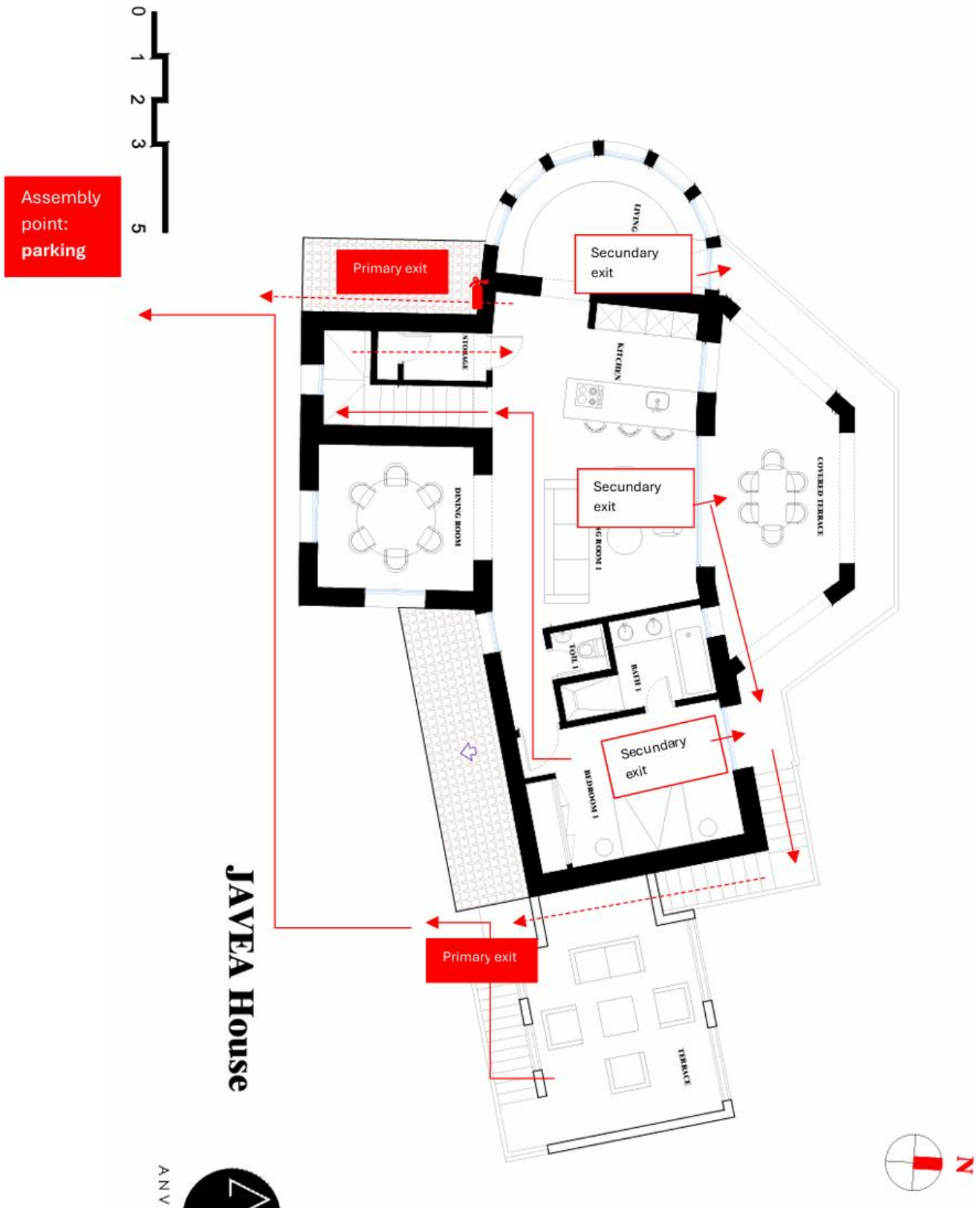
FLOOR PLAN FIRST FLOOR EVACUATION (PAGE 5)

- **Primary exit:**
 - The **main exit (front door)** located in the hallway (ground floor) leads directly outside. Go down the stairs, follow the route to the front door and continue the path to the assembly point (parking).
 - The outdoor kitchen has a door that leads directly to the assembly point (parking) through the garden.
 - From the outdoor terrace on the first floor, take the stairs down and continue the route to the assembly point (parking).
- **Secondary exits:**
 - The living room and bedroom have individual exits via sliding doors (secondary exit). Follow the route, take the outside stairs down and continue through the outdoor kitchen to the assembly point (parking).

FLOOR PLAN GROUND FLOOR EVACUATION (PAGE 6)

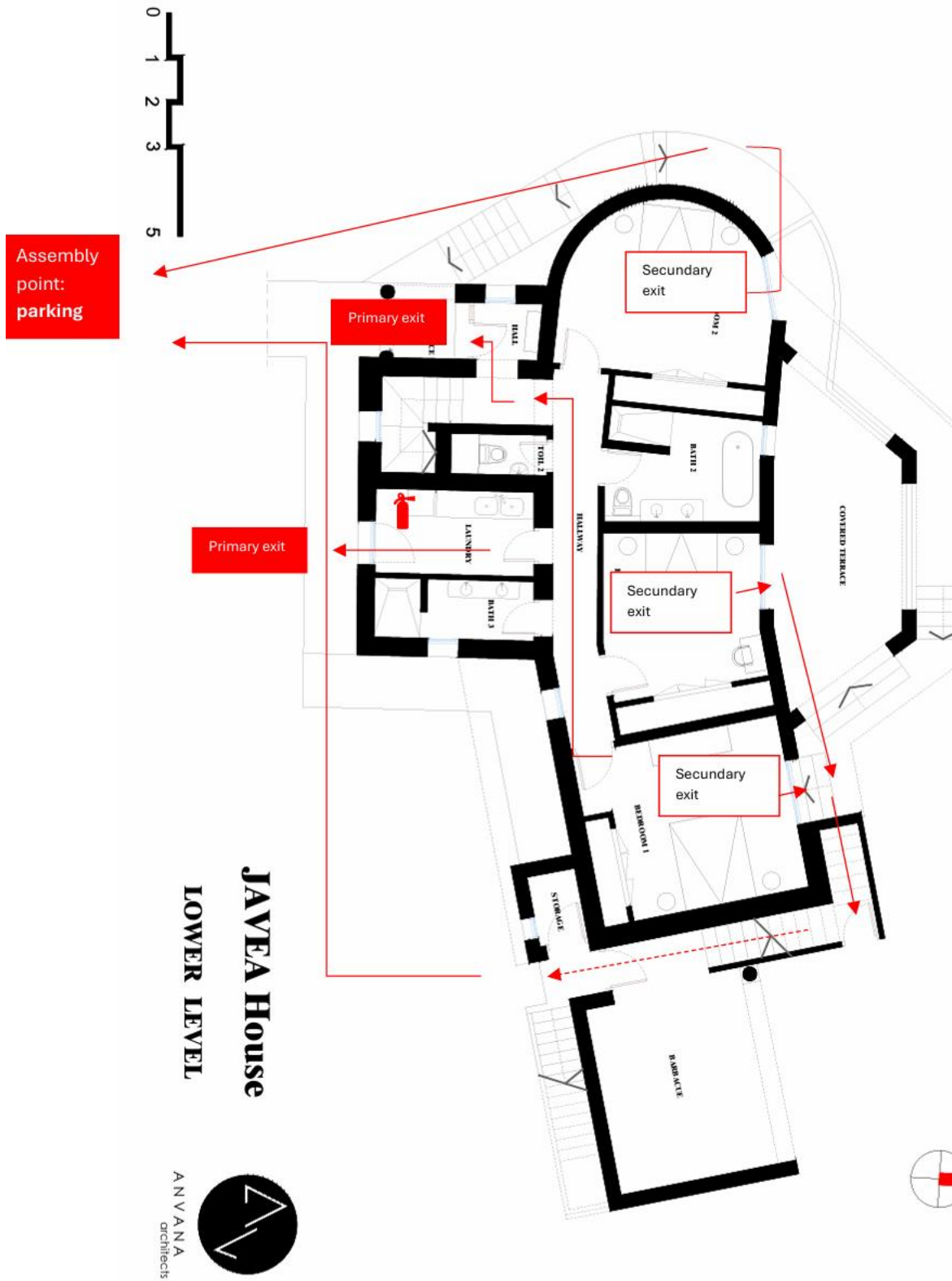
- **Primary exit:**
 - All rooms have access to the main hallway. The **main exit (front door)** of the ground living area leads directly outside. Once outside, proceed toward the assembly point (parking).
- **Secondary exits:**
 - Each of the three bedrooms and the storage room on this floor has individual exits via sliding doors, leading directly to the outdoor garden or pool. Once outside, proceed toward the assembly point (parking).

First floor



Voltage is 220 volts
Voltage around the swimming pool is 12 volts
AC (alternating current) frequency is 50Hz

Ground floor



Voltage is 220 volts
Voltage around the swimming pool is 12 volts
AC (alternating current) frequency is 50Hz

Special considerations

- Bathrooms: If you are in a bathroom at the time of evacuation, leave immediately and join the nearest group to exit the house.
- Guests with mobility issues: Ensure you assist those who may need help moving quickly to an exit. Focus on the primary (main) exits.
- Night-time evacuations: All bedrooms on the ground floor have clear access to the main hallway and exits. Ensure that all guests are familiar with the evacuation routes before going to bed.

EMERGENCY PROCEDURES

In the event of fire:

- When you hear the fire alarm, leave immediately.
- Remain calm and quickly alert others.
- Evacuate using the nearest exit listed above.
- Assist children, elderly, and others in need.
- Close doors behind you to prevent the spread of fire.
- Gather at the designated assembly point and do not re-enter the house until you are told it is safe to do so by authorities.
- Call 080 or 085 (fire department) or 112 once you are in a safe location outside the villa.

In the event of flooding:

- Move to higher levels in the house if possible. The rooftop terrace, first-floor kitchen and bedroom can provide a safe retreat.
- Do not attempt to use electrical devices or appliances.
- Call 112 and inform the agent of Costa Blanca Dreams.

In the event of severe weather:


- Stay indoors and away from windows.
- Gather in the living room areas of the first floor.
- Use the mobile phone to communicate with emergency services.

ASSEMBLY POINT

Once evacuated, proceed to the designated assembly point:

- Location: The parking spot, away from the building and other hazards.
- Ensure all members of your party are accounted for.
- Await emergency personnel and inform them if anyone is missing.

SAFETY PRECAUTIONS

- Fire Extinguishers: Placed right next to the main entrance on the first floor and located in the laundry room on the ground floor. Familiarize yourself with their location (also see the maps as shown before, sign: ).
- First Aid Kits: Placed in the room next to the kitchen.
- Smoke Alarms: Installed throughout the villa for your safety.

SECURITY INFORMATION

The Jave is equipped with a Verisure security system, providing 24/7 surveillance and monitoring for your safety and peace of mind. This system includes motion detectors, security cameras, and direct contact with emergency services. In case of an emergency or unauthorized access, Verisure will respond immediately to ensure your safety.

For more information on how Verisure works and the full range of features, please visit Verisure's official website; www.verisure.com

Remember, in the event of an emergency, your first priority is to evacuate safely following the steps outlined above.

ADDITIONAL INFORMATION & IMPORTANT REMINDERS

- Always know where the nearest exit is from your bedroom or living space.
- Discuss the evacuation plan with all guests, especially children and elderly individuals who may need assistance.
- Be aware of designated assembly points and emergency phone numbers.

By familiarizing yourself with these procedures, you're ensuring a safer stay at The Jave. If you have any questions or concerns, please don't hesitate to contact us via always@thejunebenissa.com or our agent Costa Blanca Dreams during your stay.

Stay safe and enjoy your time at The Jave!

Best regards,

The June Boutiques